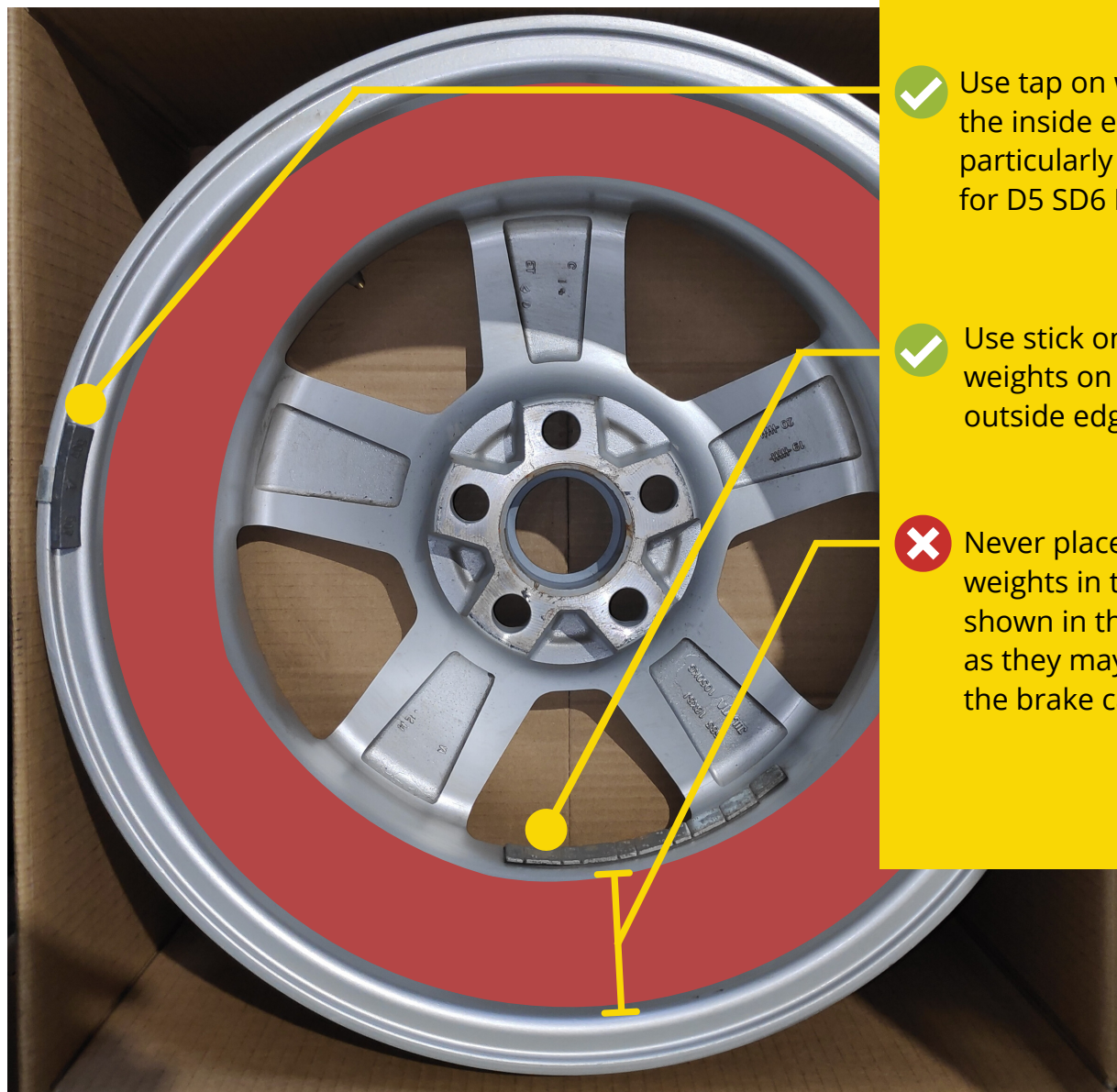


RECOMMENDED TYRE FITMENT GUIDE

When using your 18" TuffAnt wheels in accordance with the correct offset for your vehicle, there is no impact on your factory warranty.

Your 18" TuffAnt wheels are a close clearance design and as such you need to follow the direction below to ensure:

- the wheels are correctly balanced
- the wheel weights don't interfere with the brake caliper
- that the weights stay on through regular and proper use



ALLOYS

- ✓ Use tap on weights on the inside edge. This is particularly important for D5 SD6 Models
- ✓ Use stick on **slim-line** weights on extreme outside edge
- ✗ Never place wheel weights in the red zone shown in the picture, as they may catch on the brake calipers